

UG

MINIKing

BIG KAHUNA

User Guide



**STOP AT
NOTHING.**

WWW.HPIRACING.COM



En

160807-006-UG

Thank you for selecting this HPI RACING product!

This kit is designed to be fun to drive and uses top quality parts for durability and performance. The instruction manual you are reading was designed to be easy to follow yet thorough in its explanations. HPI Racing wants you to enjoy driving your new R/C kit. If you come across any problems or need some help getting through a step, you can contact us on the internet at www.hpiracing.com.

This is a high performance R/C kit, and it requires regular maintenance for best performance. If you don't do regular maintenance the performance will suffer. HPI has all the necessary parts and accessories available to keep your car performing at its best.

The caution or attention symbols will warn you about steps that can be very dangerous.

Please read and understand the instructions carefully before proceeding.



Cautions

Failure to follow these instructions can damage your kit, and cause serious bodily injury or death.



Attention

Failure to follow these instructions can cause injury to yourself or others. You might also cause property damage or damage your kit.



Cautions

- | | |
|------------------|--|
| Before Running | Please read manual (with parent, guardian or a responsible adult if necessary). |
| While Operating | Please do not run on a public street, this could cause serious accidents, personal injuries and/or property damage.
Please do not run near pedestrians or small children. |
| Before Operating | Make sure that all screws and nuts are properly tightened.
Always use fresh batteries for your transmitter and receiver to avoid losing control of the model.
Please confirm the neutral throttle trigger position. |
| After Running | Turn OFF receiver first, then turn OFF transmitter.
This will prevent the car from losing control.
After running a HPI RACING product, it is necessary to perform routine maintenance. Failure to do this can result in increased wear and damage to the engine and chassis. |
| Battery safety | Please be careful when handling the battery. It will be hot after running. If the wire is frayed, a short circuit can cause a fire. |

Contents



Section	Contents	Page
1	Troubleshooting	4
2	Maintenance	5
2-1	Chassis Maintenance	6
2-2	Wheel Maintenance	8
2-3	Differential Maintenance	9
2-4	Transmission Maintenance	12
2-5	Shock Maintenance	15

Additional Information



Quick Start Guide



Venture 18CC Technical Guide



Venture 18CC Startup Guide



TF-706 Transmitter Manual



FLX18-3S25-WP-C Competition Crawler Flux ESC Manual



This Guide



NOTE - This refers to the relevant guide (as above) and the relevant section. In this example, Section 1-1 of the ESC Manual.

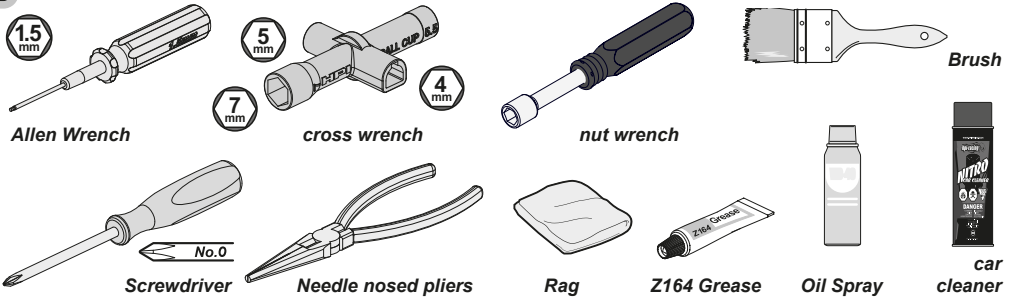
1 Troubleshooting



If RC car does not move or you have no control, see below

Problem	Cause	Remedy	Section
Does Not Move.	Battery is not placed properly in the transmitter.	Place batteries in the transmitter properly.	i SG 1-2-1
	Weak or no battery in model.	Install charged battery.	i SG 1-1 SG 1-3-2
	Damaged motor.	Replace with new motor.	i 2-4
	Frayed or broken wiring.	Splice and insulate wiring completely.	i EM 1-1
	ESC is shut down by heat protection circuit.	Stop driving immediately, do not drive the car until the Speed Controller cools down.	i EM 2-3
No Control.	Weak or no batteries in transmitter or model.	Install charged or fresh batteries.	i SG 1-2
	Neutral position or trim is incorrect.	Adjust the steering trim.	i SG 5-1
	Binding Setup is incorrect.	Make sure binding is setup properly.	i SG 2-2 RM 5-1
Steering and Throttle Function Reversed.	Servo reverse switch is in the wrong position.	Set to correct position.	i RM 4-4 RM 4-5
	Wires from ESC to motor are improperly connected.	Re-connect the motor.	i EM 1-1

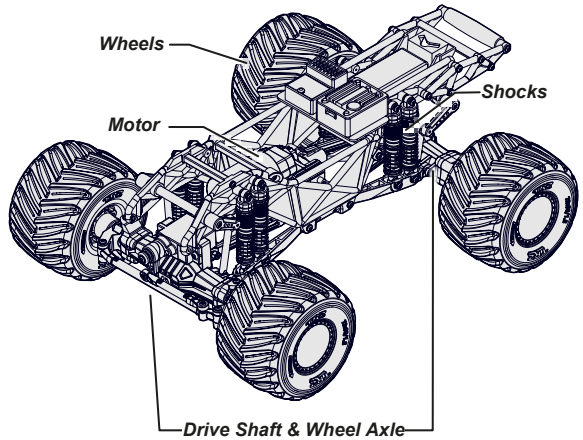
Recommended Tools



Maintenance schedule

For maintenance schedule, refer to chart.

After running, clean the chassis and check all moving parts for damage. If any parts are broken or damaged, repair or replace them before the next run. Regular maintenance is necessary to prevent damage to the car and maintain its performance.



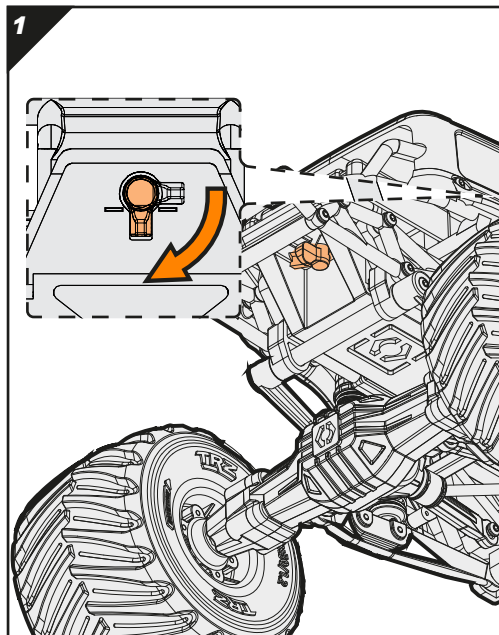
! Refer to sell-able number to purchase parts.

! Look for any damaged parts.

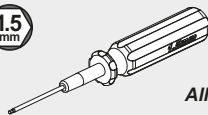
 x1 Every Pack.	 x10 Every 10 Packs.	 x20 Every 20 Packs.	Maintenance Item 	Section Reference
<input checked="" type="checkbox"/>	<input checked="" type="checkbox"/>	<input checked="" type="checkbox"/>	Chassis Maintenance	2-1 PG 6
<input checked="" type="checkbox"/>	<input checked="" type="checkbox"/>	<input checked="" type="checkbox"/>	Wheel Maintenance	2-2 PG 8
		<input checked="" type="checkbox"/>	Differential Maintenance	2-3 PG 9
		<input checked="" type="checkbox"/>	Transmission Maintenance	2-4 PG 12
	<input checked="" type="checkbox"/>	<input checked="" type="checkbox"/>	Shock Maintenance	2-5 PG 15
<input checked="" type="checkbox"/>	<input checked="" type="checkbox"/>	<input checked="" type="checkbox"/>	Radio Maintenance	RMI

2-1 Chassis Maintenance

After running, clean the car and lubricate metal to metal contacts. Replace damaged parts, check that all the screws are tight.

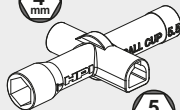


1.5 mm



Allen Wrench

4 mm



7 mm

5 mm

Cross wrench



Brush



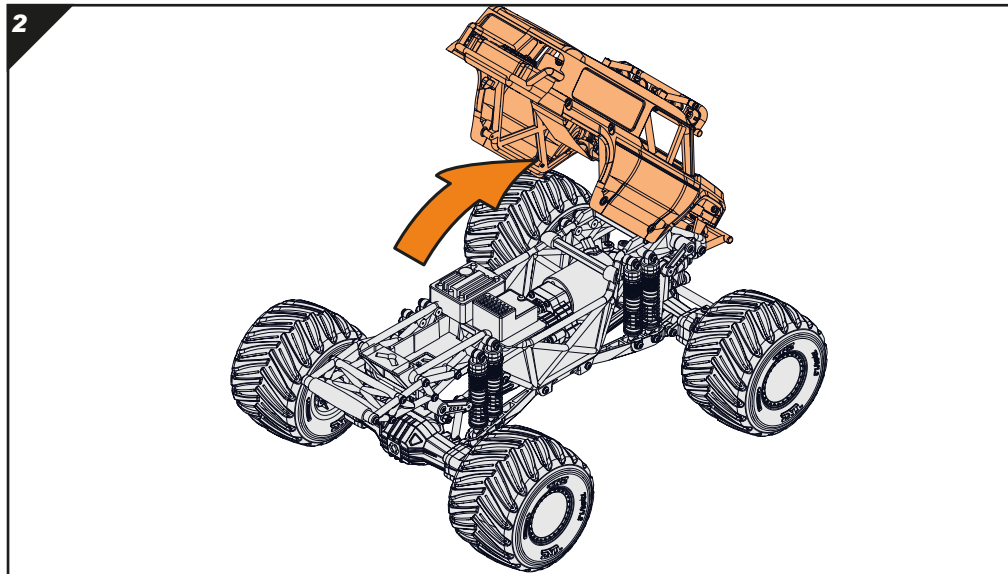
Rag



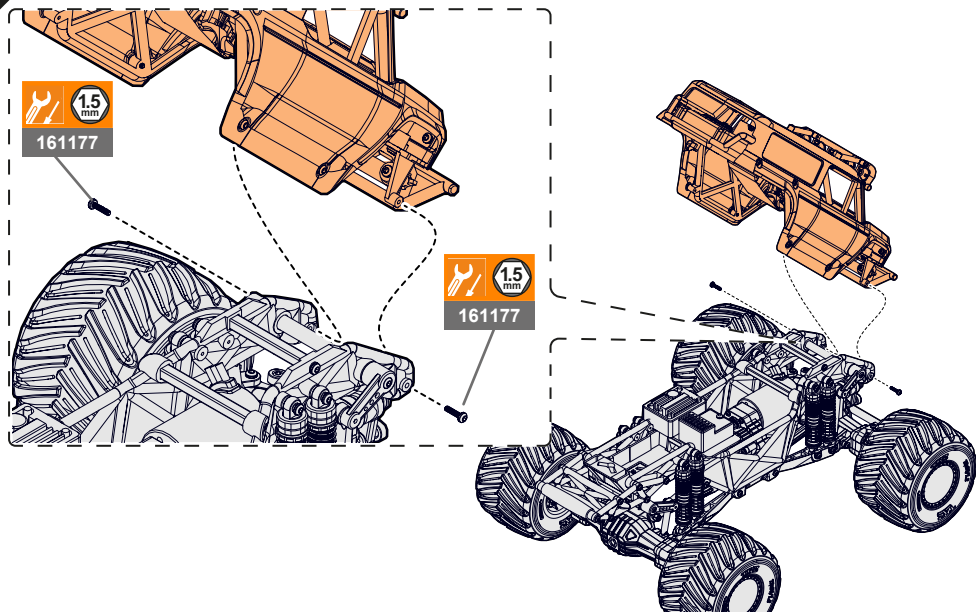
Car Cleaner



Oil Spray



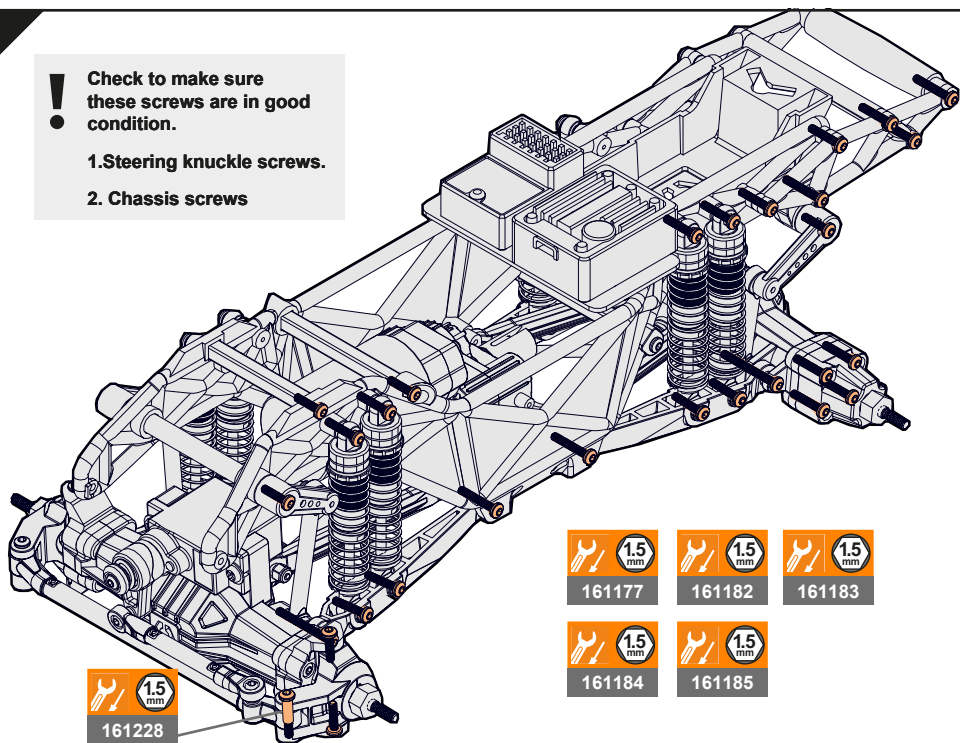
3



4

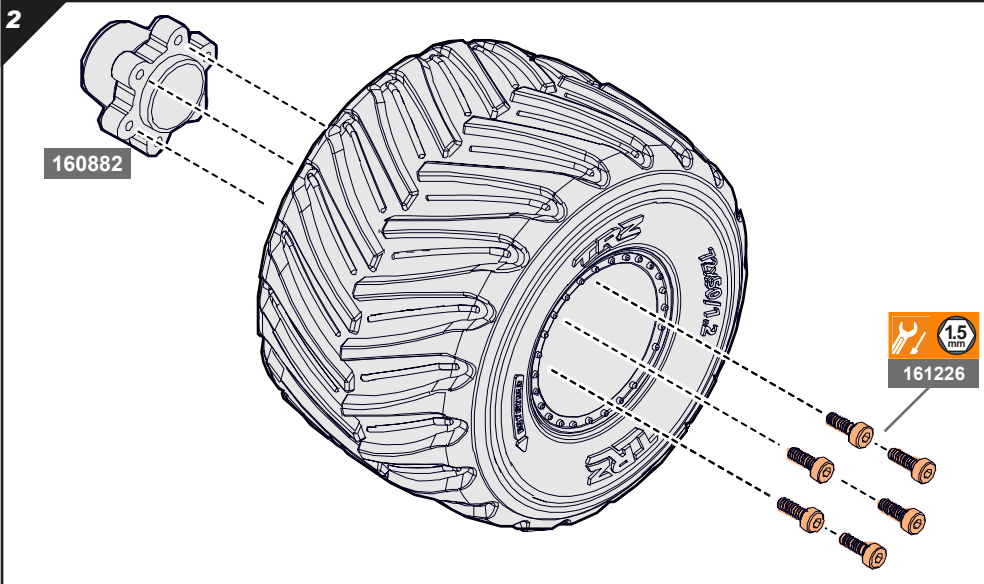
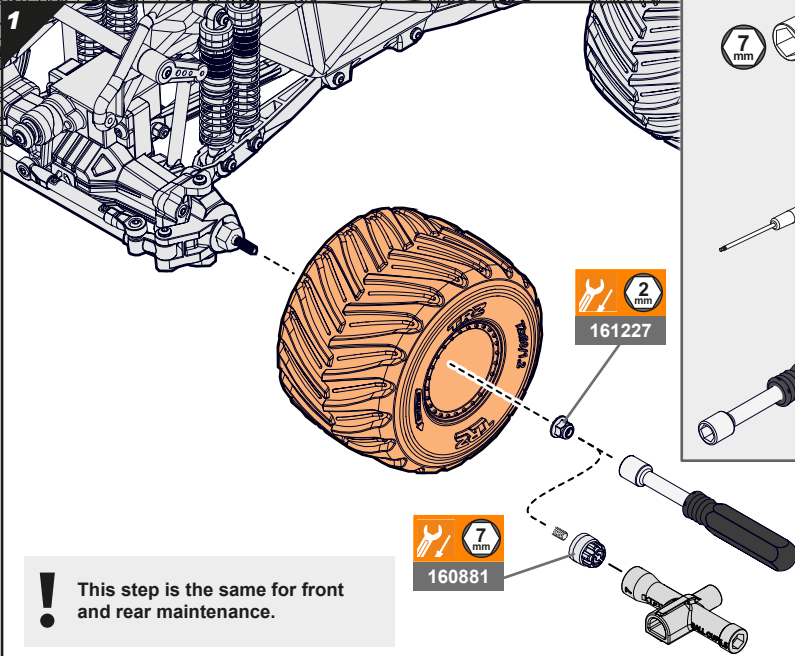
! Check to make sure
 these screws are in good
 condition.

1. Steering knuckle screws.
2. Chassis screws



2-2 Wheel Maintenance

Make sure the tires are secured on the wheels.



2-3 Differential Maintenance

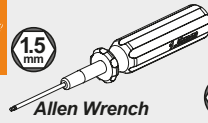
Inspect for gear wear. Repair or replace if necessary.

1

! This step is the same for left and right.

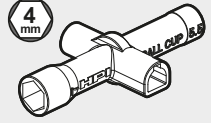


1.5 mm



Allen Wrench

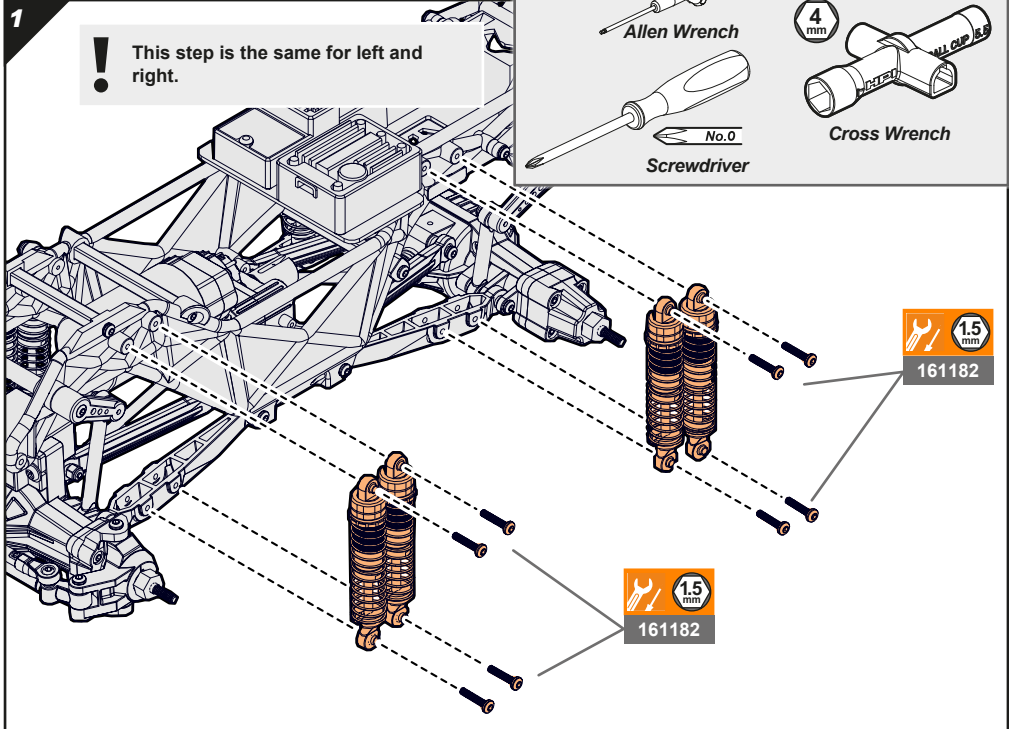
4 mm



Cross Wrench

No.0

Screwdriver



2



161185



161184



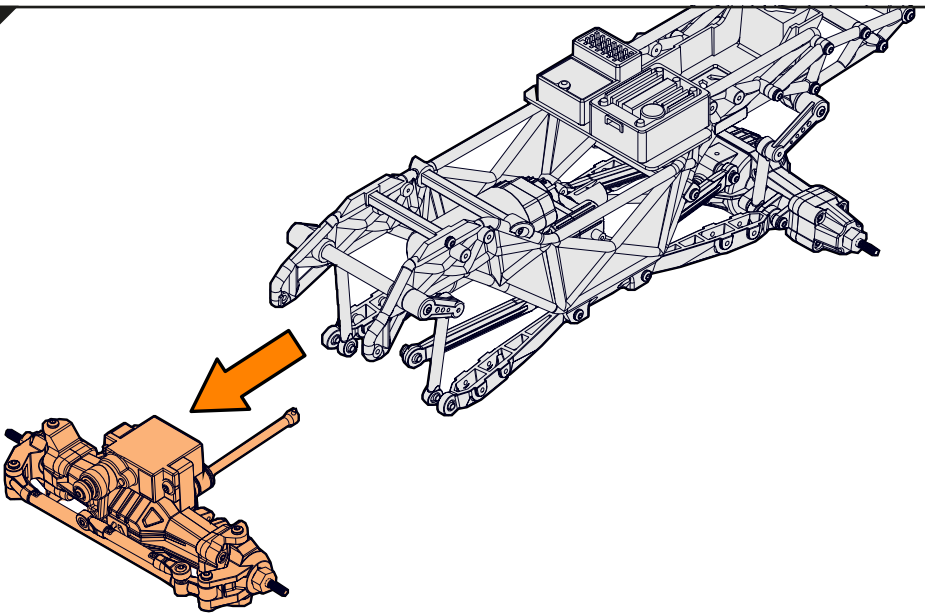
161187



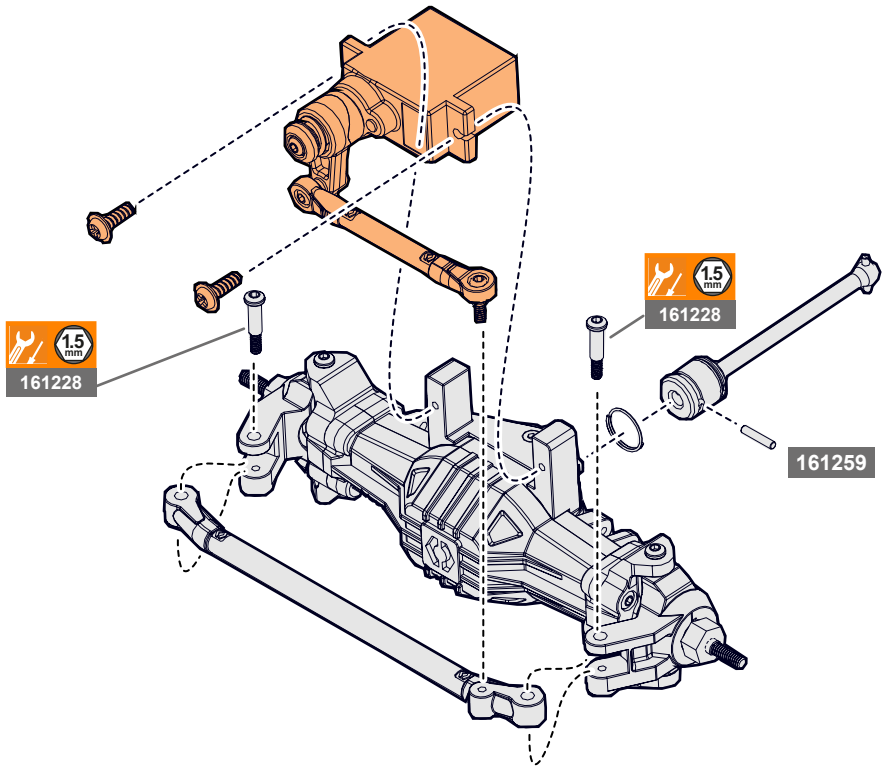
161184

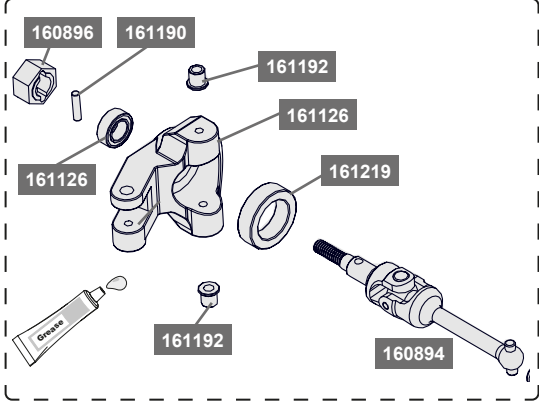
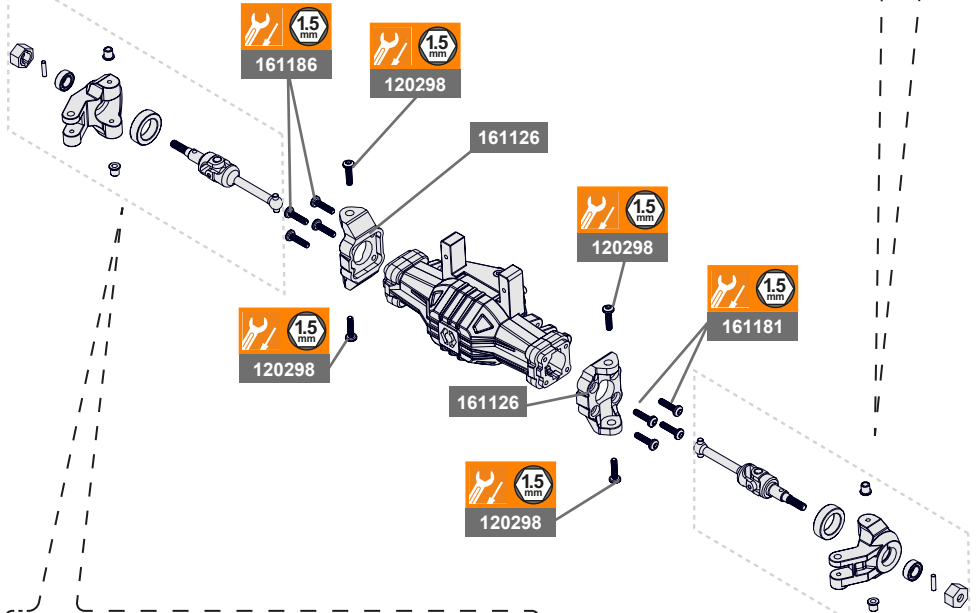
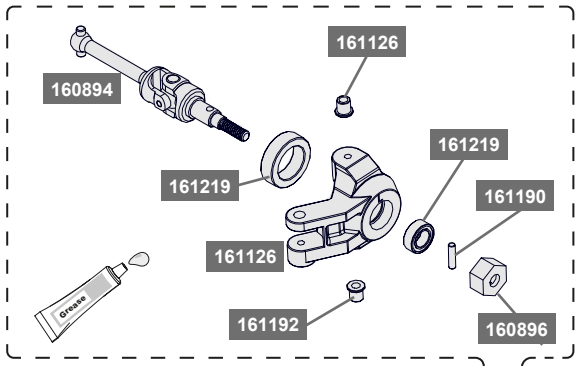
! This step is the same for front and rear maintenance.

3

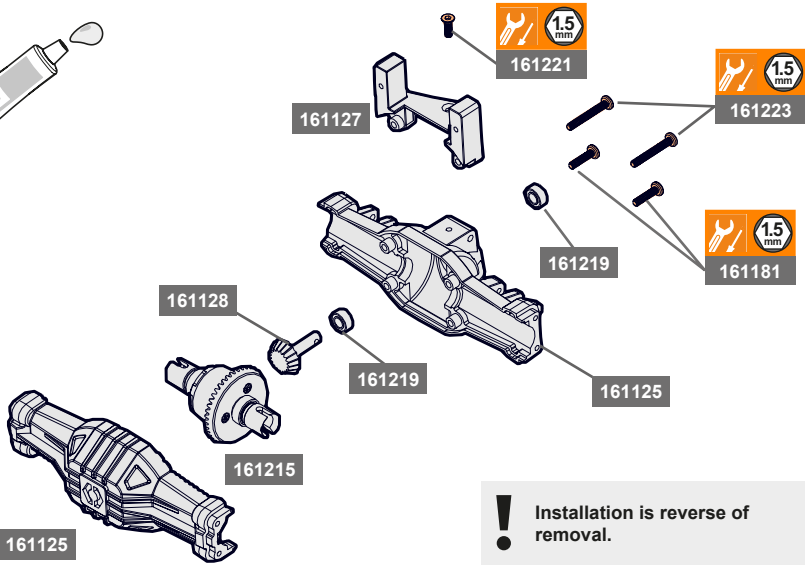


4



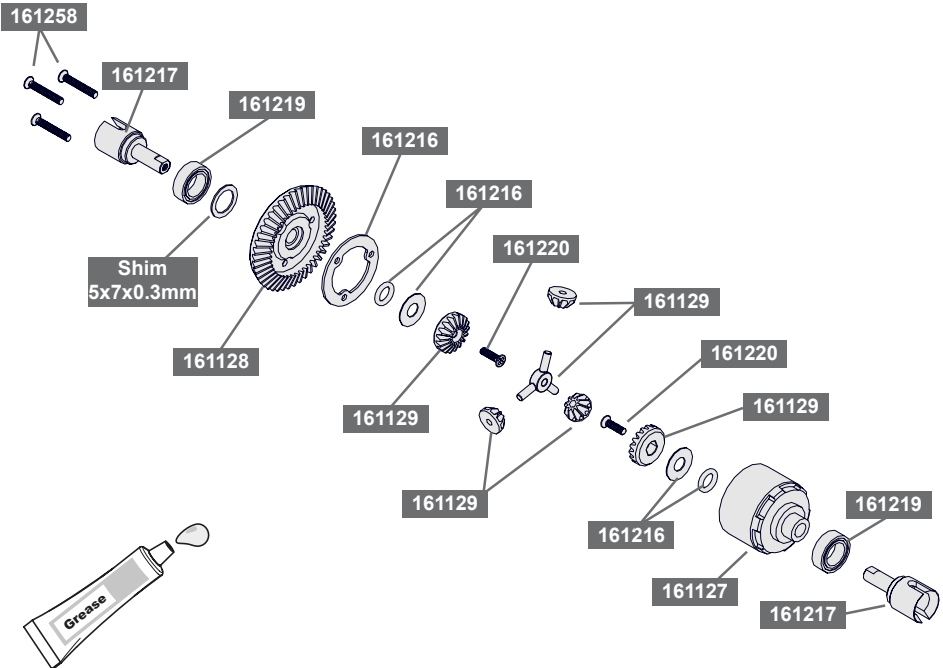


6



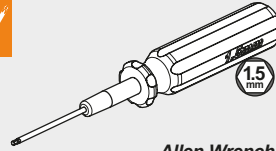
! Installation is reverse of removal.

6



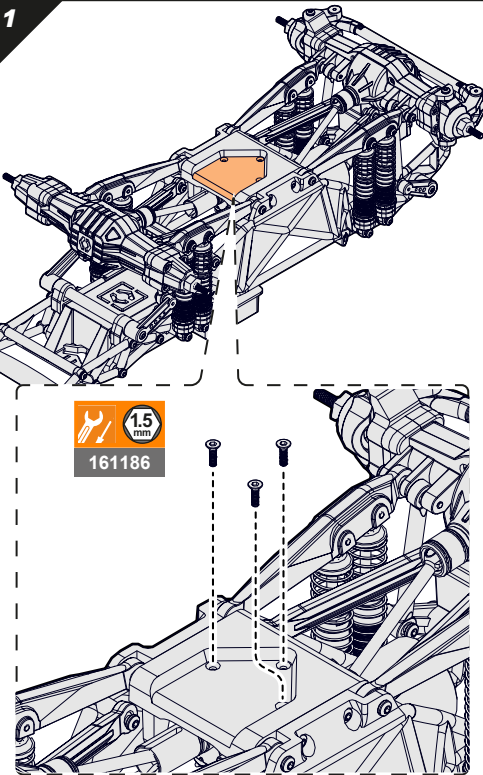
2-4 Transmission Maintenance

Inspect for gear wear. Repair or replace if necessary.

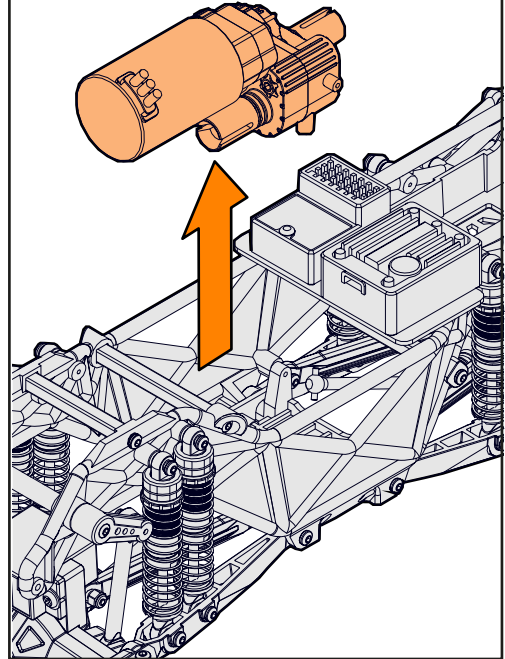


Allen Wrench

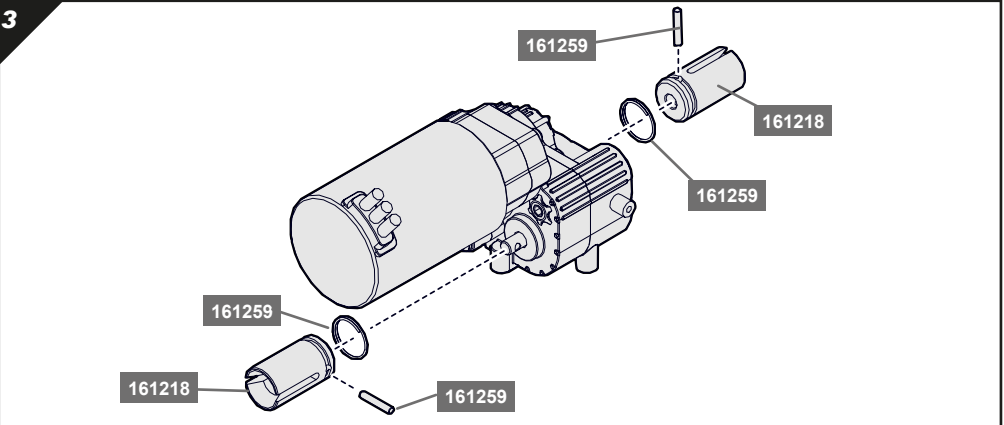
1



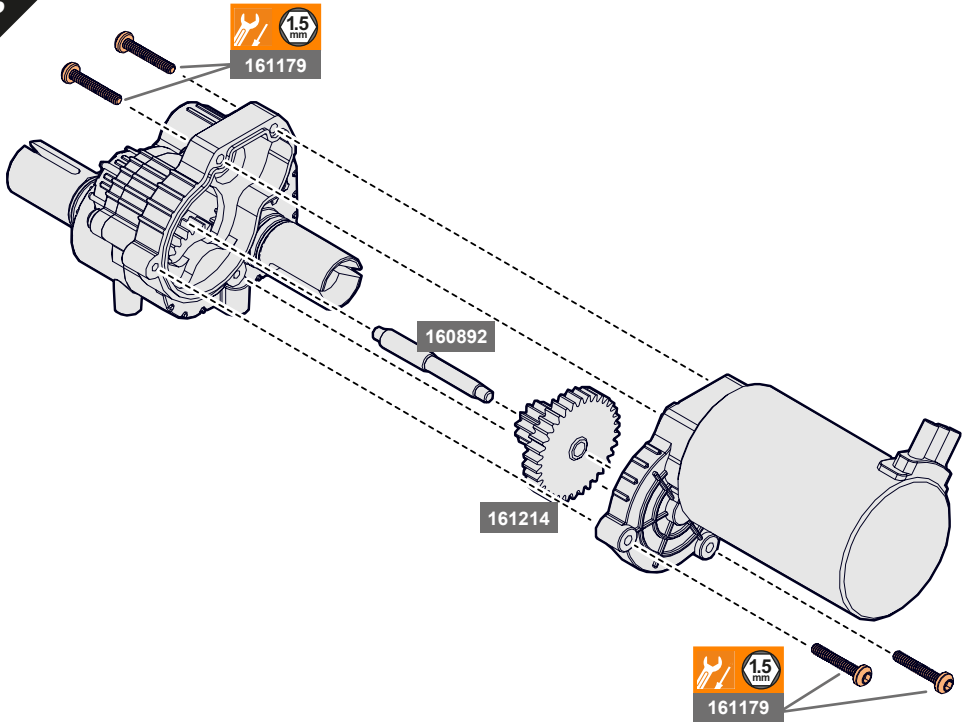
2



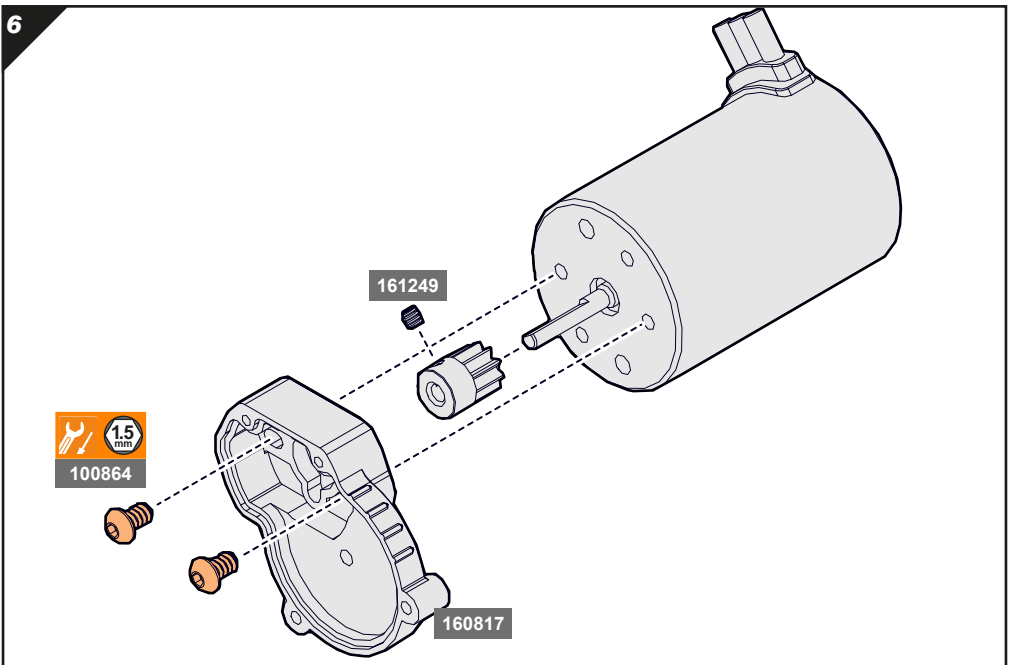
3

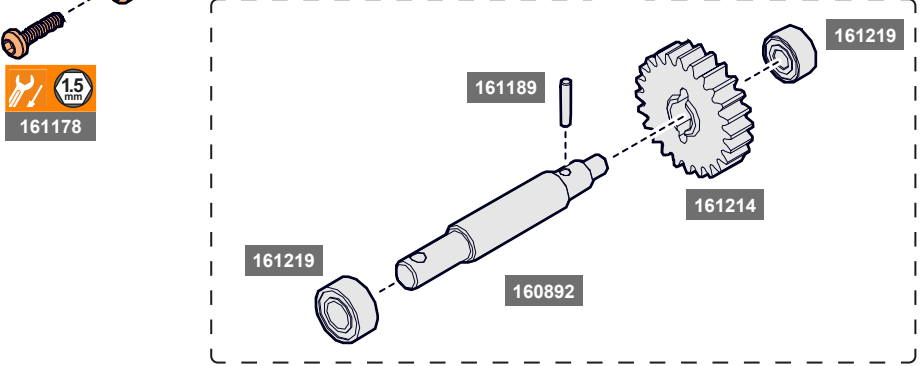
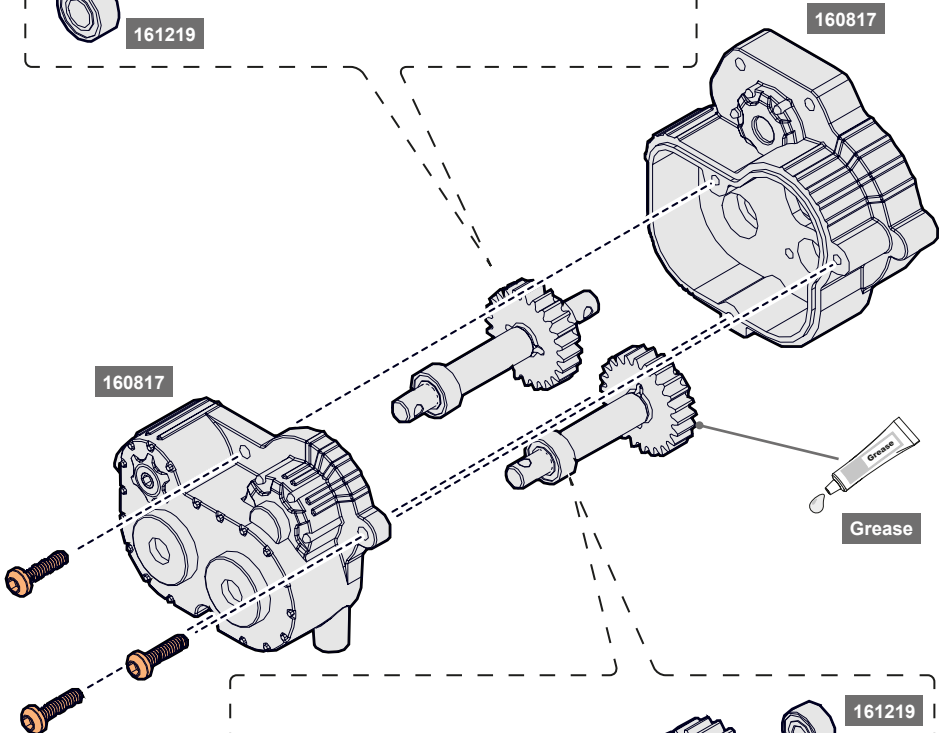
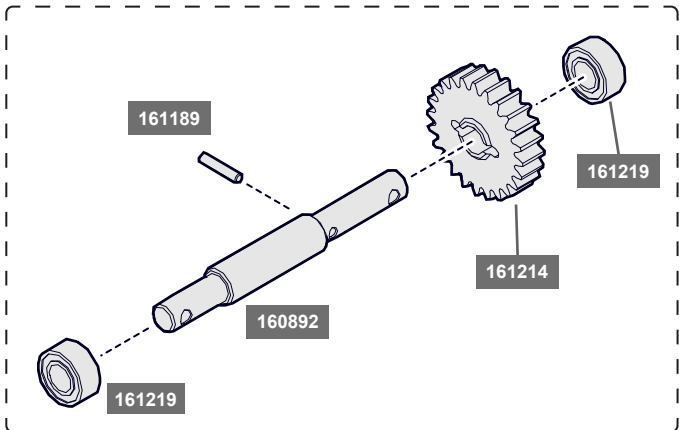


5



6



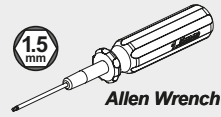


2-5 Shock Maintenance

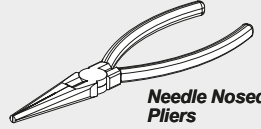
Inspect shocks for oil leakage and for bent shock shafts.
Repair or replace if necessary



1.5 mm



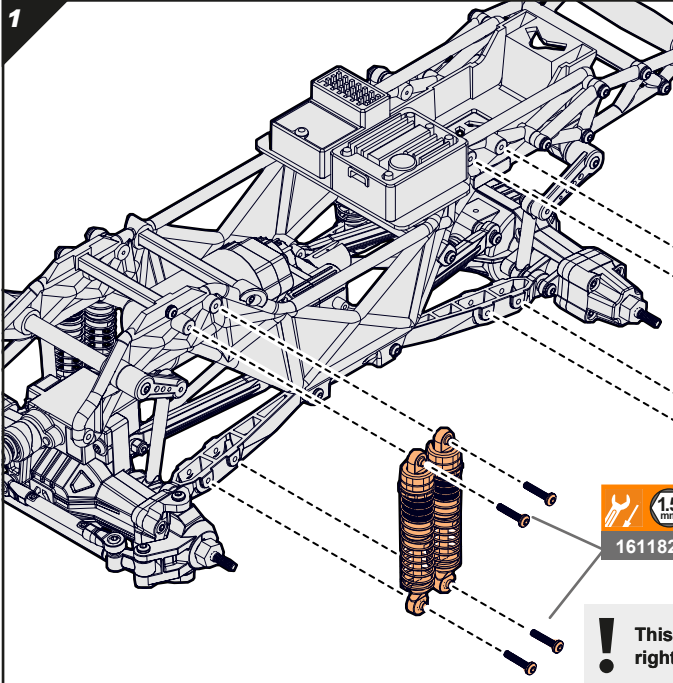
Allen Wrench



Needle Nosed Pliers



Rag

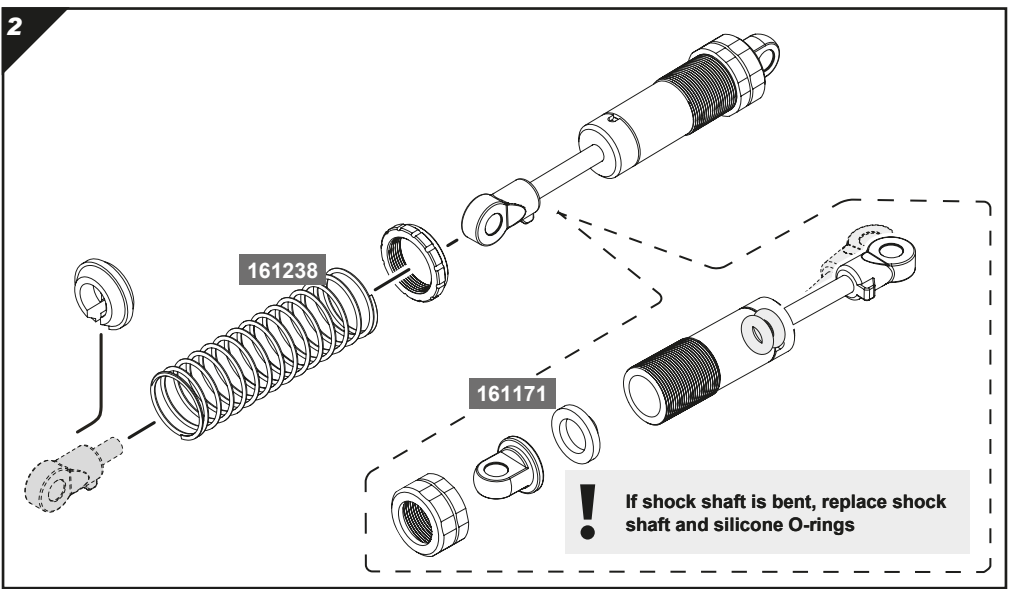


15 mm
161182



15 mm
161182

! This step is the same for left and right.



161238

161171

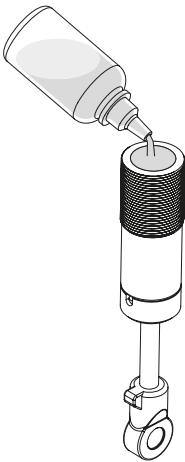
! If shock shaft is bent, replace shock shaft and silicone O-rings

3

If necessary, re-fill oil shocks with oil (available separately)

Stock shock oil is equivalent to 100cst silicone oil.

Check for leaking oil.

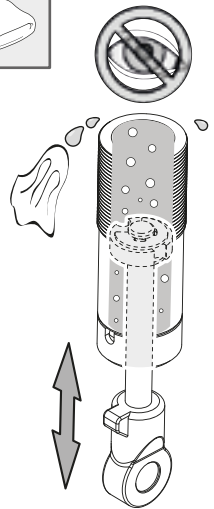


4

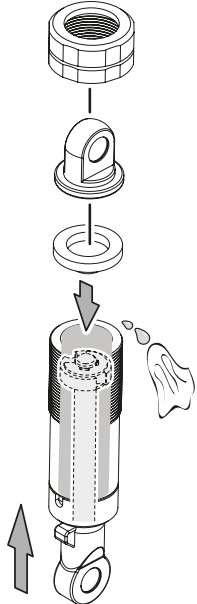


Check for excess oil. Be sure to use a rag to clean up.

Move the shaft up and down slowly to remove all air bubbles.

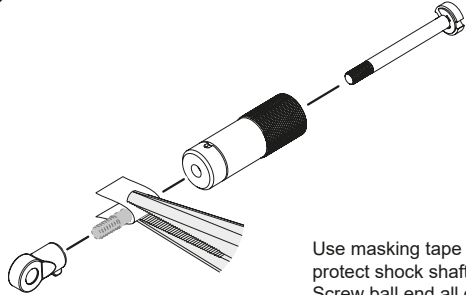


5



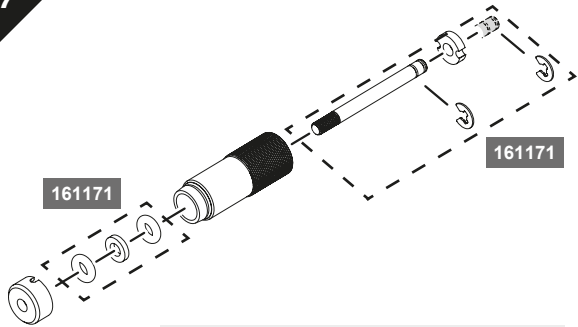
Compress shock shaft completely to remove excess oil. This ensures smooth shock travel after assembly.

6



Use masking tape to protect shock shaft. Screw ball end all of the way onto the shock shaft.

7



! Installation is reverse of removal.



HPI RACING A/S

www.hpiracing.com

HPI Racing A/S

Jegindevej 21

DK - 8800 Viborg

Denmark

Email: info@hpiracing.com

Serial Number
Serienummer
Numéro de série
シリアルナンバー

